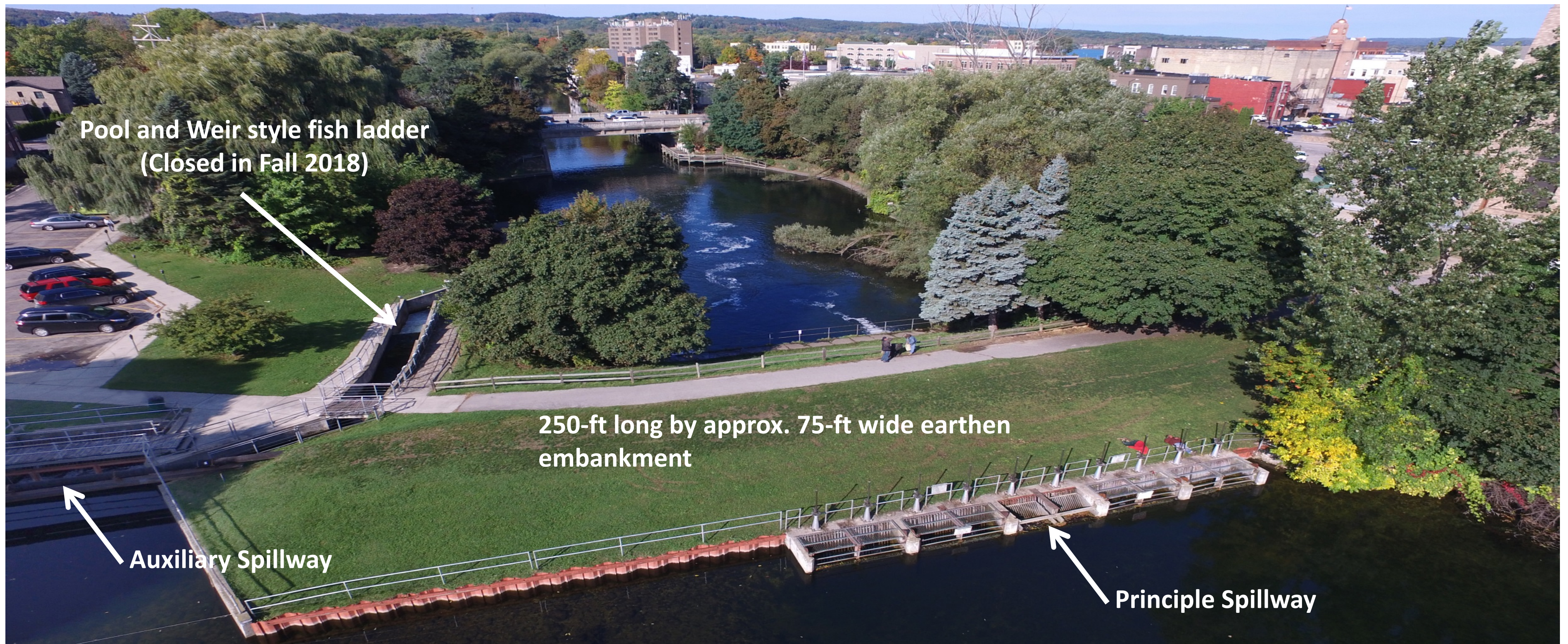
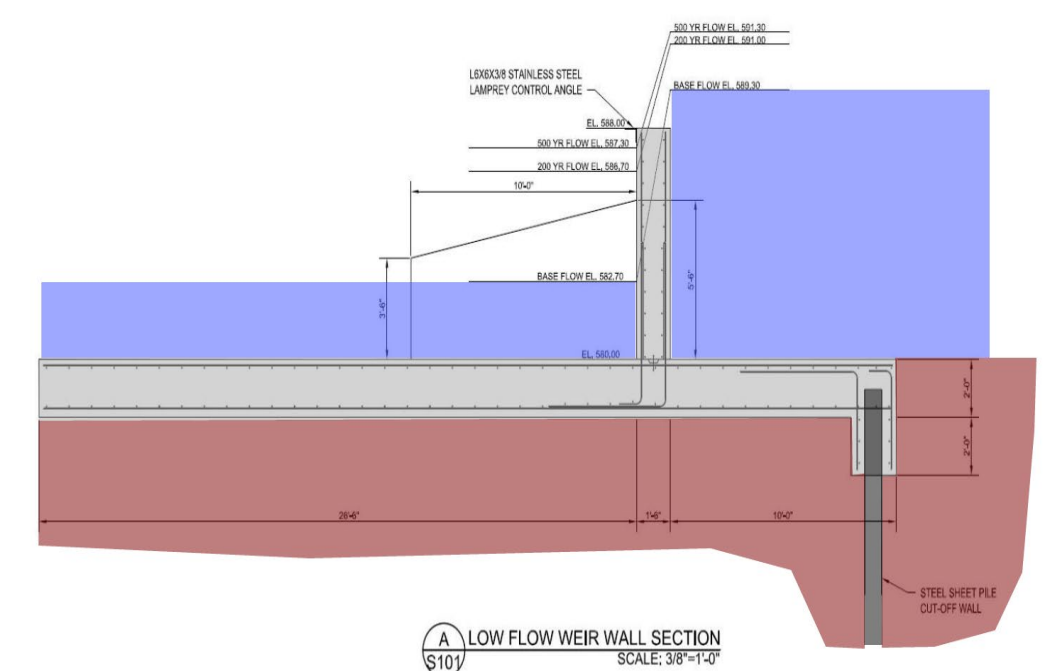
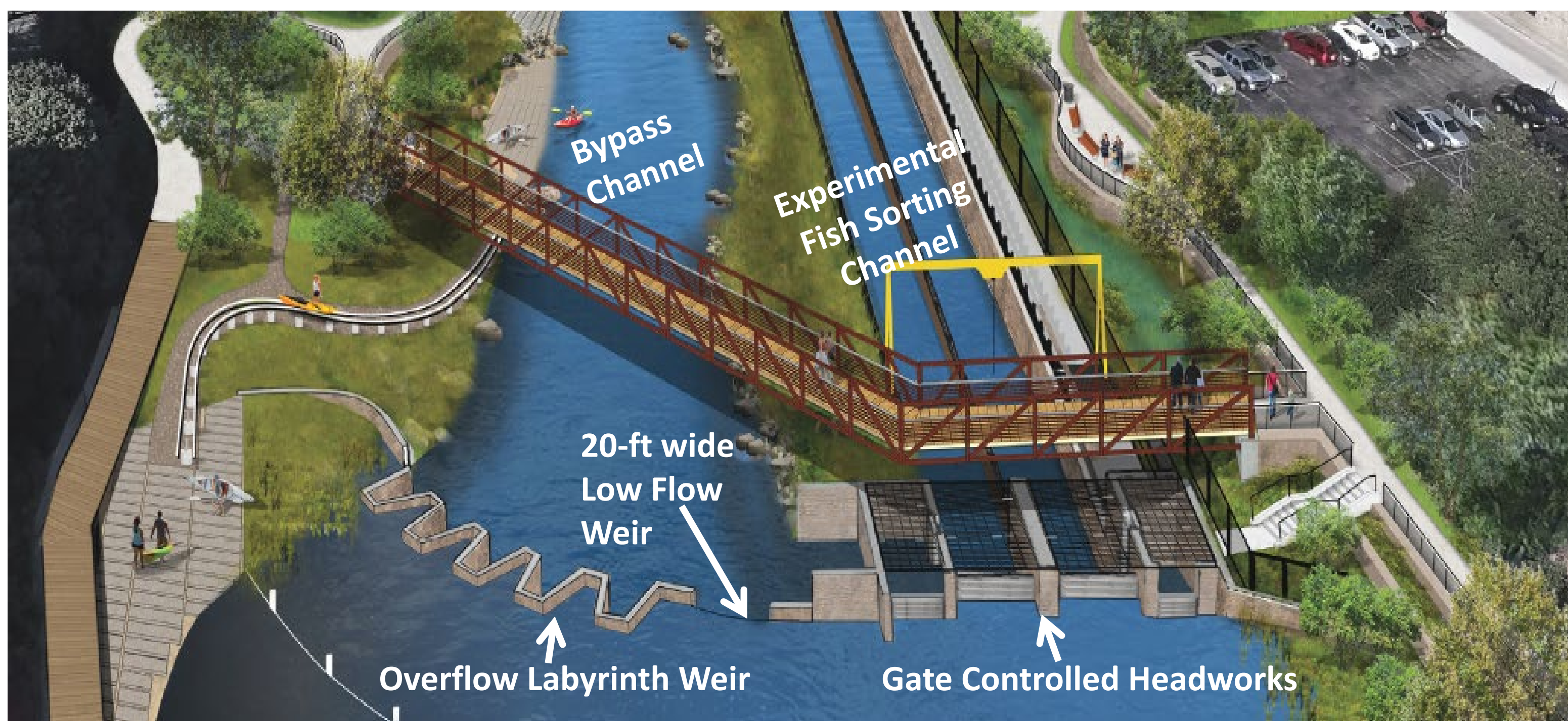


## Dam Safety

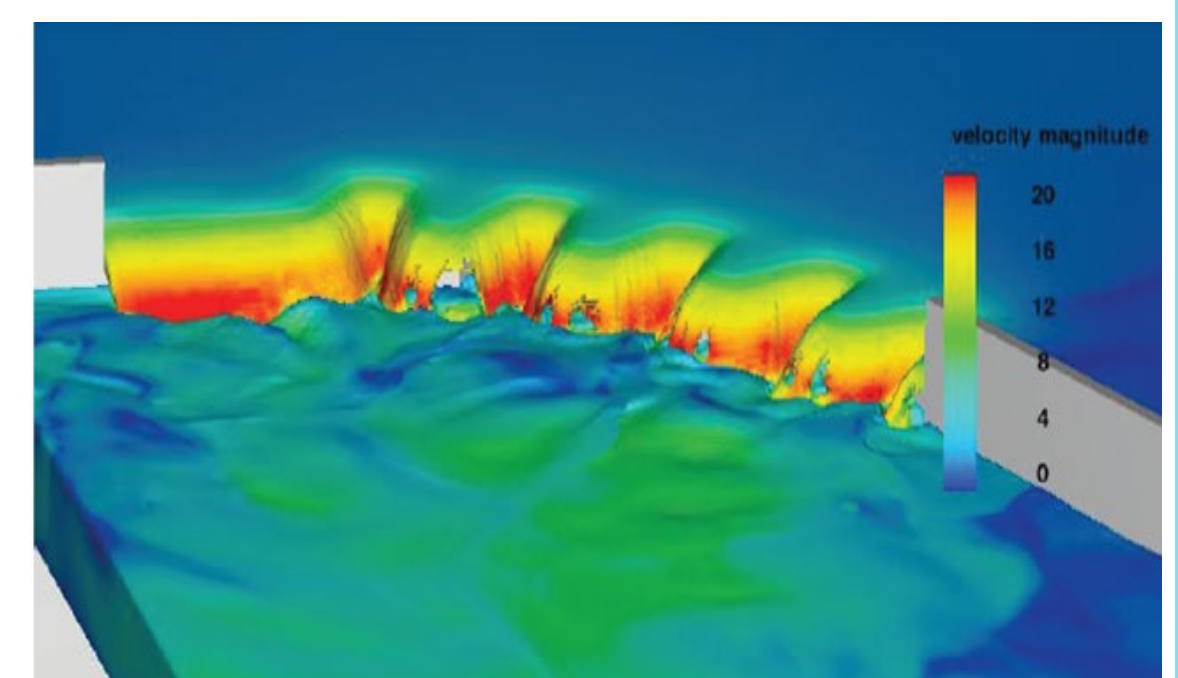
### Existing Union Street Dam:



### Proposed Union Street Dam:

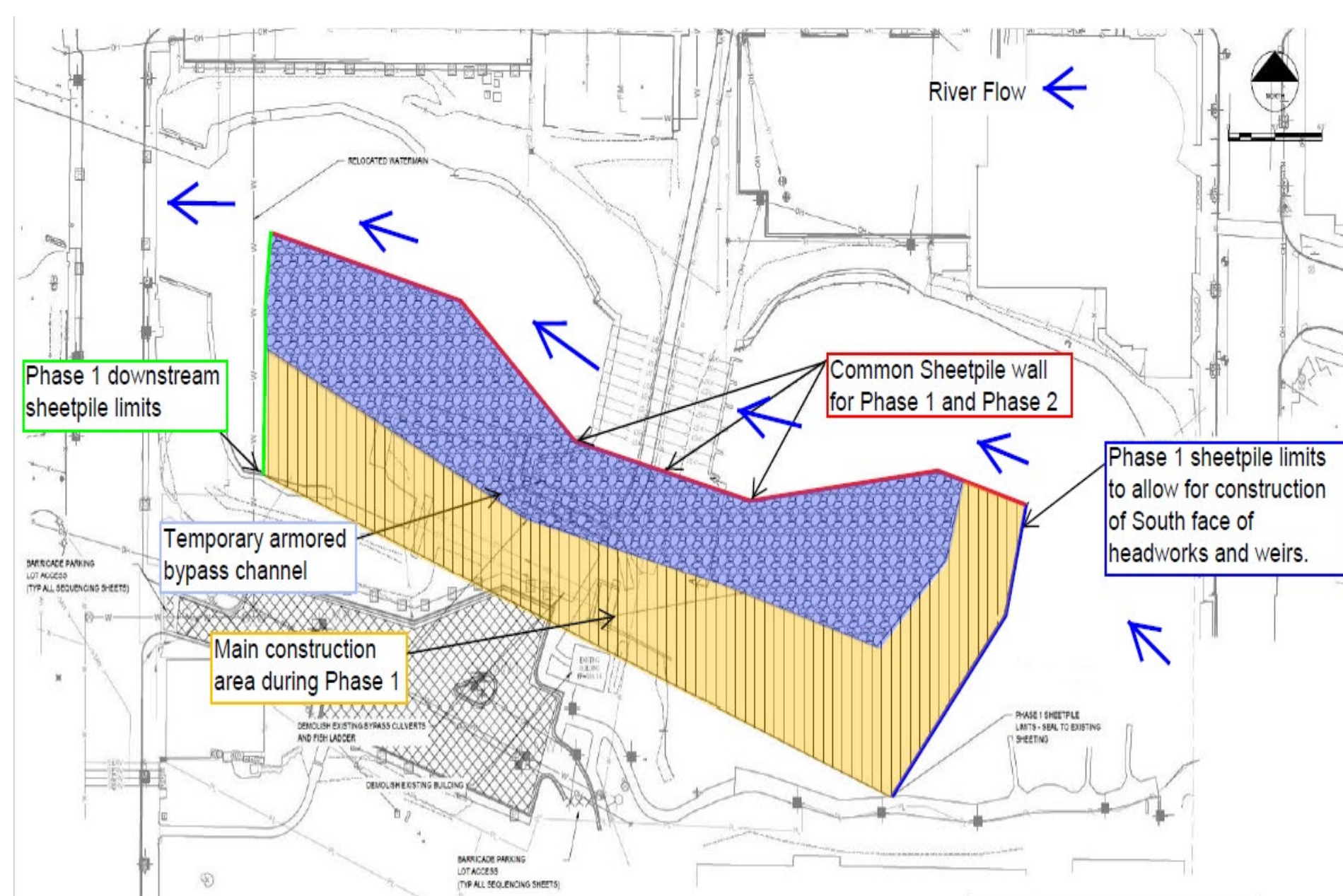


Graphical Section Through Low Flow Weir

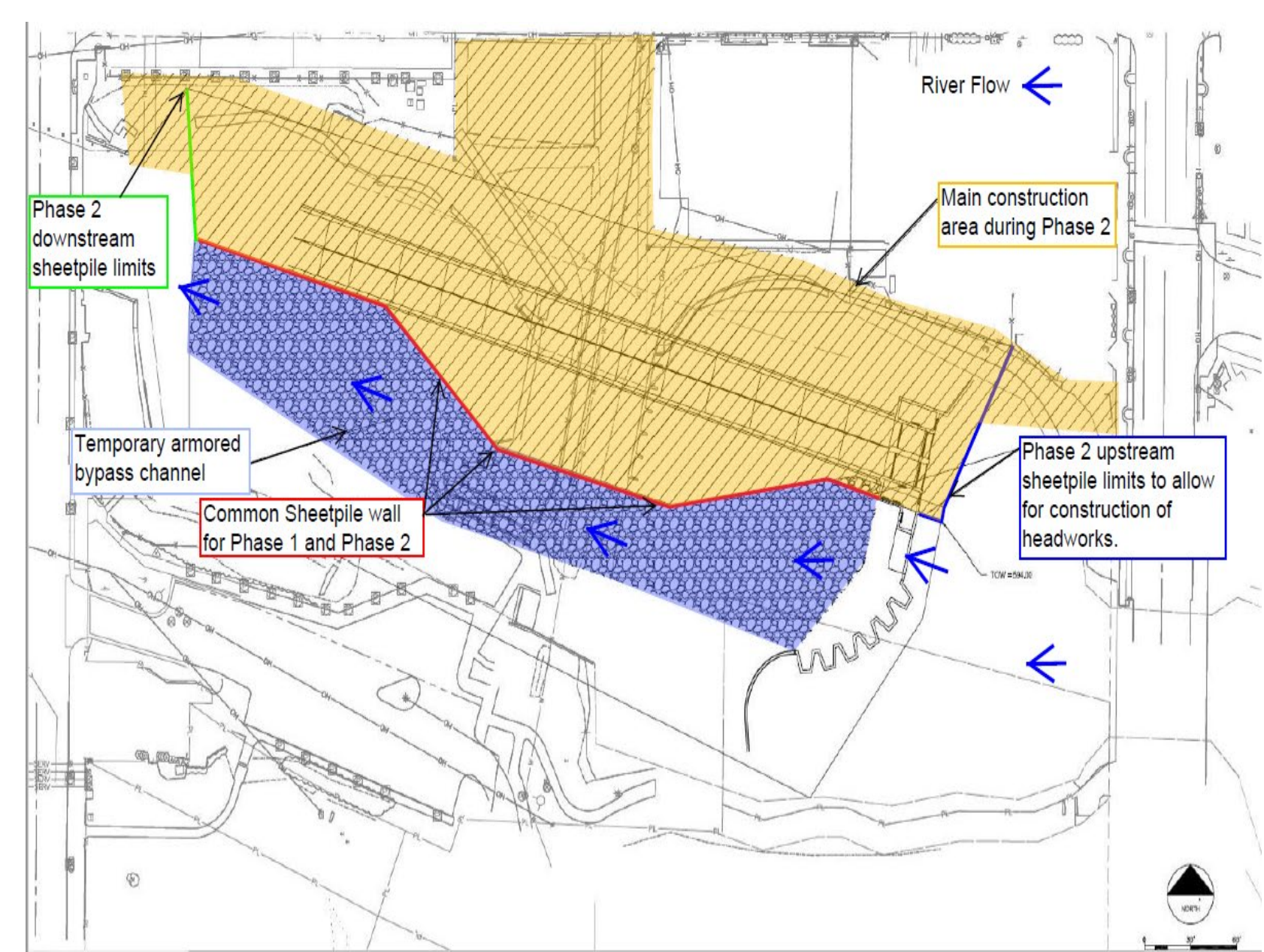


200-yr Flow Modeled Over Proposed Low Flow Weir and Labyrinth Weir

**Temporary Construction Phasing:** Dam construction to be completed in two construction seasons over the course of two years. Both phases will utilize steel sheetpile to isolate work areas. The top of the sheetpile walls will be set to the 10-year flood elevation which will limit water level rises upstream during high flow events.



Phase 1 Construction



Phase 2 Construction